

Microsoft SharePoint Foundation 2010 - the installation process

Almost everyone who uses the computer in their daily duties has had contact with Microsoft Office. However, teamwork in a company may combine multiple threads and their respective types of information. Calendars, tasks, documents, discussions, contacts, etc. - Microsoft SharePoint offers efficient management and processing of such amounts of data. It is a platform created for the integration of individual products, like the abovementioned Microsoft Office or Exchange mail server.

SharePoint Server 2010 is offered in three versions: Foundation, Standard and Enterprise. Every edition has the previous one's functionality and other, more sophisticated and complex functions. In this article we will focus on the Foundation version, because it is free and seems to meet the expectations of a large number of customers.

Installation requirements for Microsoft SharePoint 2010

We assume the installation of SharePoint and the version of SQL Server on one machine to form a farm, you may need in future, to be able to expand it to more servers. We ignore description of the SQL Server installation and just focus on SharePoint.

Hardware requirements (enough for smooth operation in medium-sized companies):

- 64-bit processor, quad-core processor;
- 8 GB RAM;
- 80 GB disk space.

Software requirements:

- Windows Server 2008 64-bit (Standard, Enterprise, Data Center lub Web Server z SP2);
- Microsoft SQL Server 64-bit (2008 SP1, 2008 R2 lub 2005 SP3) – it's possible to use the Express version;
- Existing Active Directory domain in which we will create an account for SharePoint: sqlSvcAcc - SQL Server service; spAdmin – the installation will be carried out here (it must be the local admin); spFarmAcc - your server farm.

Microsoft SharePoint 2010 Installation

1. We download the Foundation version of the Sharepoint 2010 installation package from the Microsoft website.
2. When we run the program (on spAdmin account), we choose the option *Install software such as Prerequisites*. Using it, we can install any additional components required by SharePoint.



Schema 1- The start screen of SharePoint 2010 installation



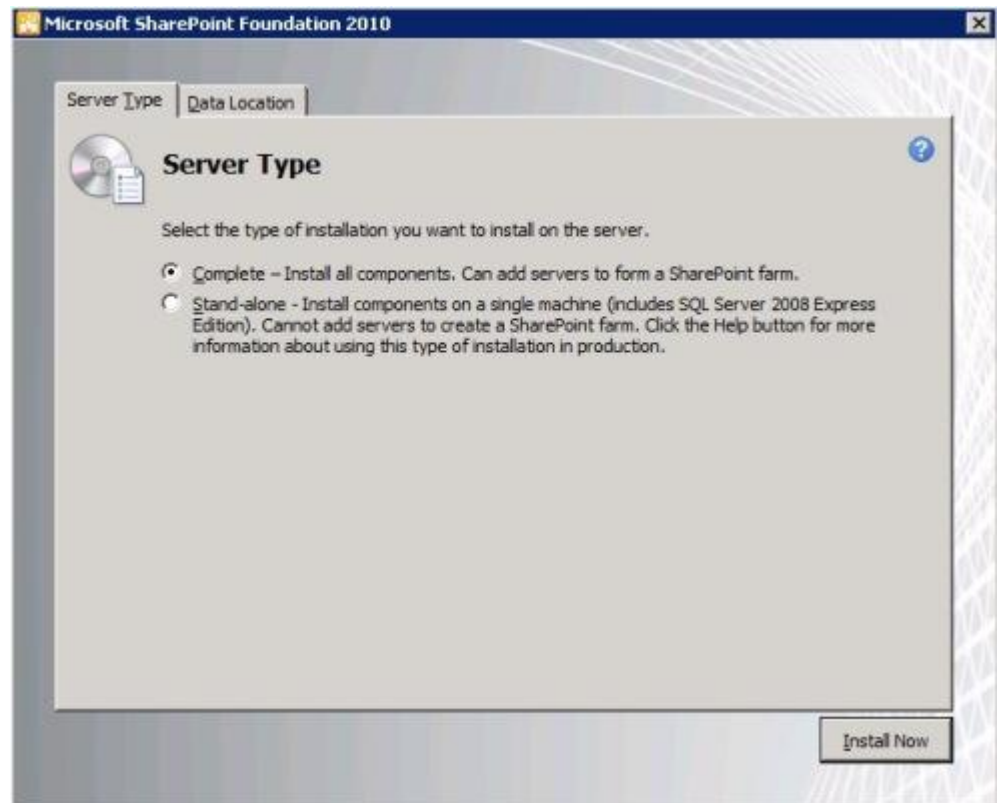
3. Once we complete the above process, we can proceed to the proper [product installation](#).

We carry out the *Server Farm* installation under the original assumption. I recommend the *Standalone* option only for very small and simple test environments.

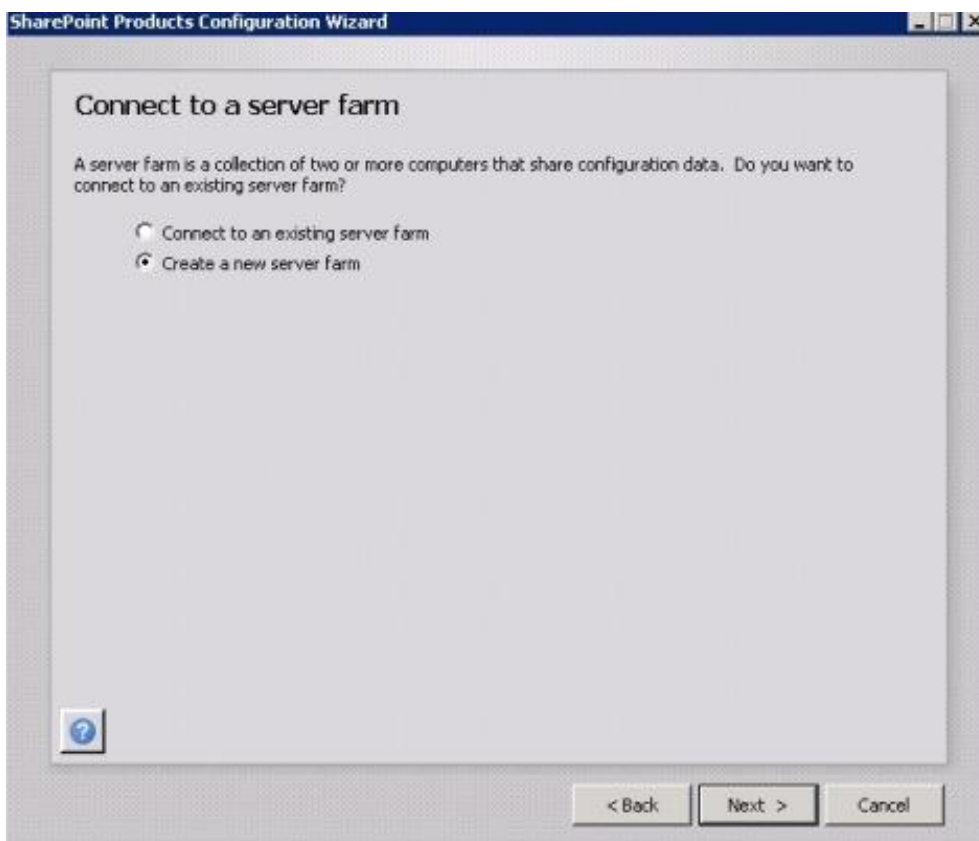
Schema 2 – Installation types

4. In the next step we once more choose the extensive installation (type *Complete*).

The stand-alone option does not allow to add more servers in the future.



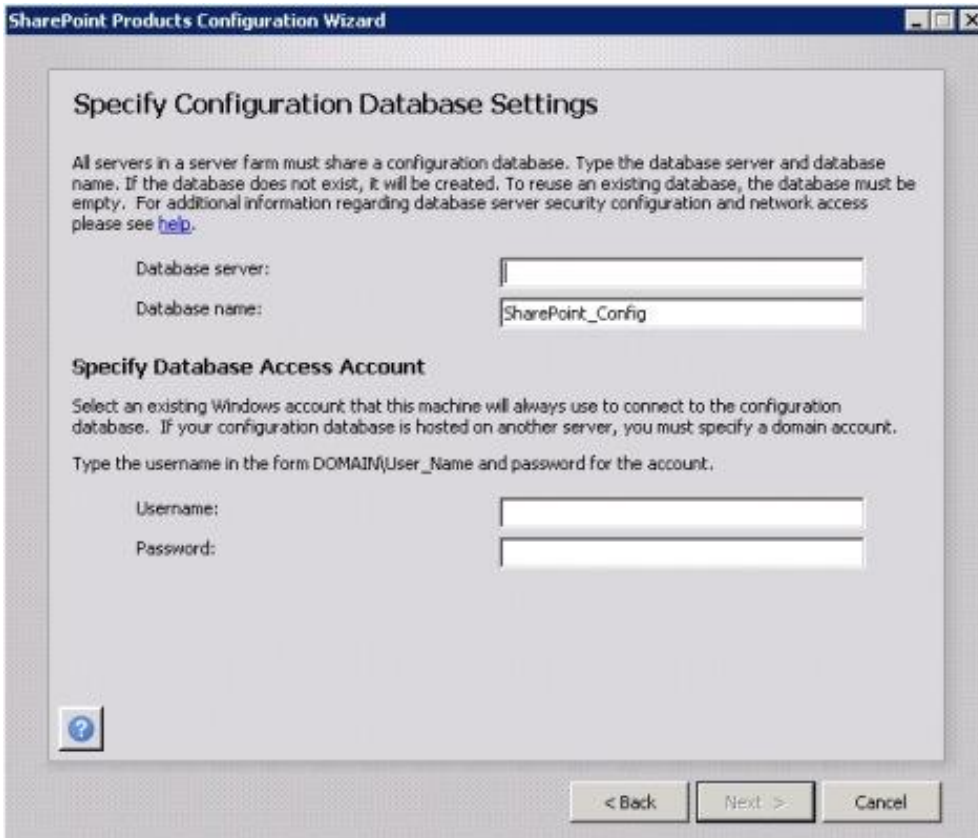
Schema 3 – Installation types



5. We create a new farm – *Create a new server farm*.

The *Connect to an existing server farm* option can be used in the future, when we will be adding other servers .

Schemat 4 – Server Connection



Schema 5– Database configuration

6. The account, on which the installer was launched (spAdmin) must have the following permissions on the SQL server:

- securityadmin,
- dbcreator,
- sysadmin.

We enter server parameters: the server address and the username and password of the spFarmAcc account.

7. We protect the farm by setting a security phrase required for when we will be adding other servers.



Schema 6 – Security settings



Schema 7 – Web application configuration

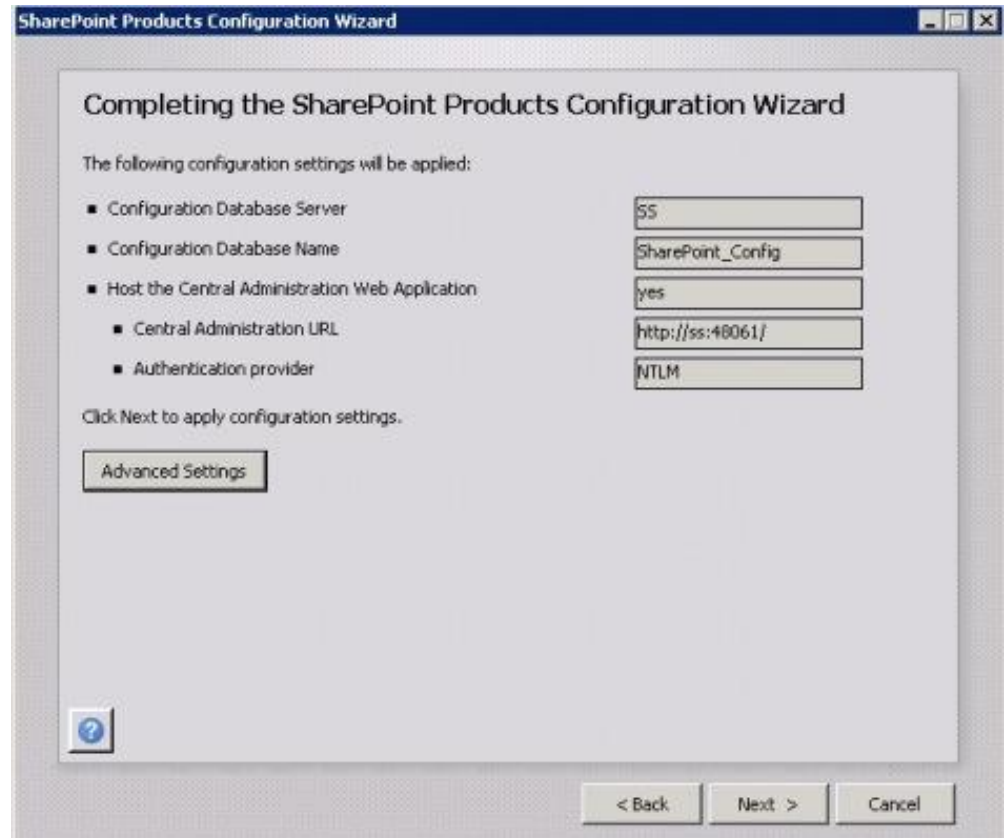
8. We can set the port (or leave random), which will have an administrative function.

In addition, the type of authentication must be selected.

9. At the end, we get a brief summary of settings.

We click *Next* and wait until the installer finishes. Then we can run the Setup Wizard, which will allow us to create our first site.

We are done. We can proceed to [customize the environment](#).



Schema 8 – Configuration Wizard

Summary

Microsoft SharePoint is a complex solution that supports business processes. It is the right platform for both small businesses, where it may rely on one server, and for large enterprises and corporations, which can run on multiple, properly configured servers. Microsoft SharePoint helps to control the confusion, which may be the result of a large amount of varied data. Ideally suited for team work, it is sometimes substituted for Project Server. The SharePoint Server 2010 Free Software Foundation Edition is popular and surely deserves the attention of many companies.

Article author: **Maciej Wierzbicki**,
MCSA, Support Online Sp. z o.o.

Support Online uses the SharePoint solution in their own business. We also implement this service for our customers. We have rich experience and vast knowledge of both SharePoint and other solutions offered by the IT market leader - Microsoft. If you are interested in using SharePoint or other software solutions in your company - contact us:

Support Online Sp. z o.o.
phone +48 22 335 28 00
e-mail: support@so.com.pl
www.support-online.pl